



## Technical description and Instructions for use

### VOLTAGE DETECTOR type VKP-36M



**Manufacturer and service:**  
**VILLBEK Kft.**  
6728 Szeged, Vágány u. 15.  
Phone: 62/464-371 Fax: 62/473-087  
E-mail: villbek@villbek.hu  
[www.villbek.hu](http://www.villbek.hu)



## TECHNICAL INFORMATION

Model number:	VKP-36M
Nominal voltage range:	10-36 kV
Maximum voltage:	40.5 kV
Threshold voltage:	$3.6 \text{ kV} \leq U_k \leq 4.5 \text{ kV}$
Nominal frequency:	50 Hz

Outdoor design: Voltage monitor designed for wet conditions, indoors or outdoors.  
Category L: The voltage detector without a contact electrode.

Climate class:	N (-25 - +55Co)
VEIKI test permit number:	5472/VNL
Relevant standard:	MSZ EN 61243-1:2005
Supply voltage:	6 V (2x CR 2032)
Operating current consumption:	35 mA
Quiescent current consumption:	0 mA
Signals:	Light and sound

Display group: III ("voltage present" state indication, which has a standby state)

Insulated handle of voltage detector: VK-TR-C-2000

### **Purpose, field of application:**

Its purpose is the reliability of the presence or absence of operating voltage  
its detection is a check of the grounding of the equipment.

### **Regulations:**

The regulations for the use of the voltage detector are in point 6.2.3 of MSZ 1585 according to:

The voltage-free state must be checked on all poles of the electrical equipment at or closest to the place of work. The electrical equipment voltage this state of its parts without the local operating regulations in accordance with practice must be checked based on. In the case of nominal alternating voltage between 10 and 36 kV (three-phase system) it is. It must be checked with a single-pole voltage detector according to MSZ EN 61243-1. On these at voltage levels, the indication of the instruments built into the electrical equipment is not sufficient to check the no-voltage condition.



## User's Guide:

The TEST button is used to check the functionality of the voltage detector is done by pressing. When pressed, the red and green LEDs light up they flash alternately and an intermittent beep is heard. When releasing the push button a green LED lights up, then approx. 25 sec. after it goes dark and the voltage detector is ready state.

Before and after each use, the functionality of the spy must be checked with the TEST button.

If there is no sound or light when the TEST button is pressed, replace the batteries. If the battery voltage drops below 4 V, the red LED vibrates and flashes and there is no sound signal.

If the device's signals cannot be detected even after replacing the battery, the voltage detector malfunctioned, use is **FORBIDDEN!** If the red LED lights up and the green LED vibrates, it is electronics have failed, **THEN THE VOLTAGE DETECTOR IS PROHIBITED USE!**

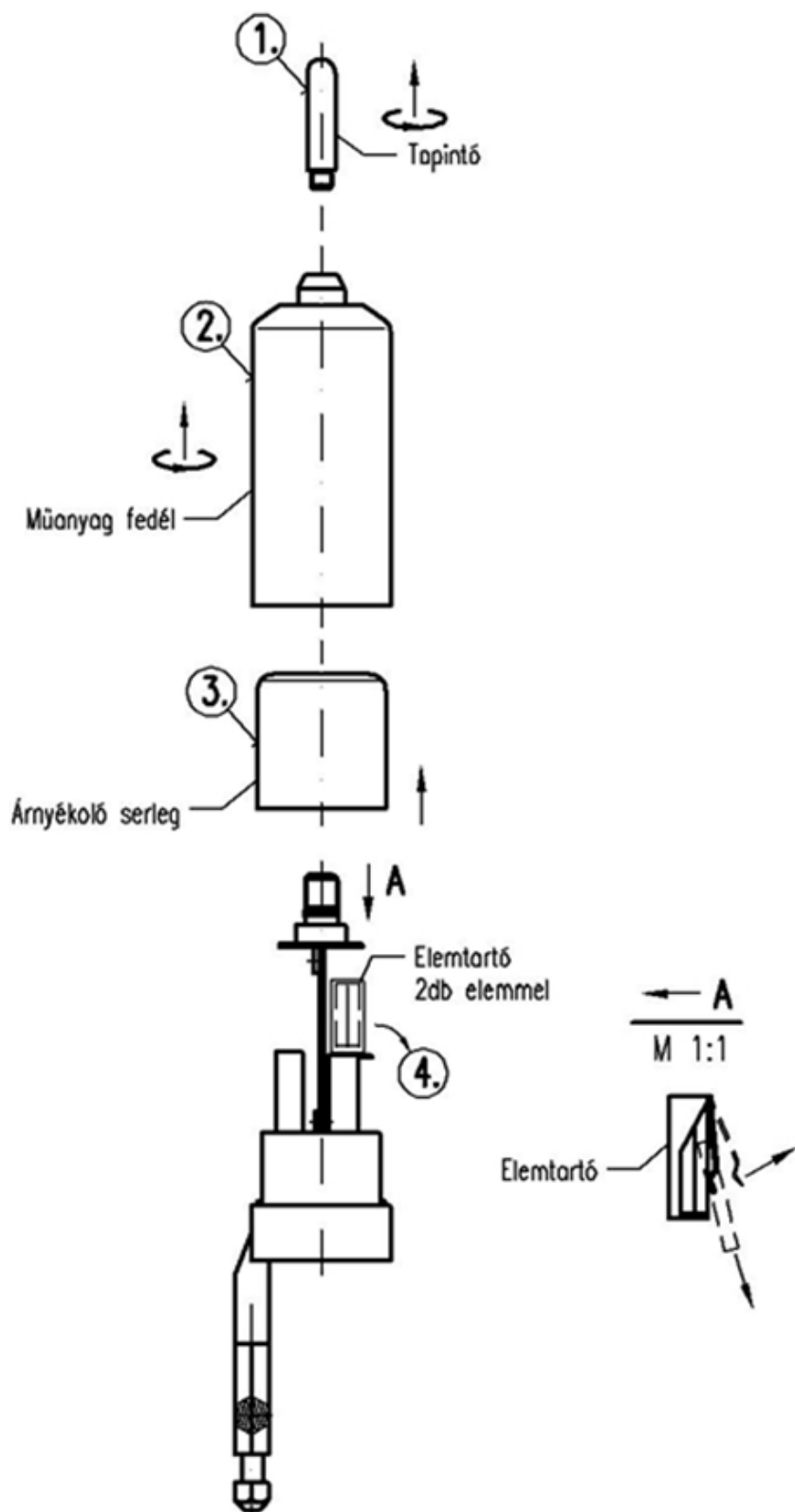
Another way to check is to know the feeler tip of the spy (10-36 kV) is touched to a point under voltage. The red LED flashes and the at the same time, if an intermittent sound signal is detected, the voltage monitor is operational.

## ATTENTION!

Avoid voltage sensing mode in which the voltage sensing sensor is approach the phase conductor to be tested with your head in such a way that you are two phases at the same time affects phase and ground potential. On rails not protected by the covering or demarcation when monitoring the voltage, you must choose a position of the operating rod such that the voltage probe sensor head should only touch the phase conductor to be tested, and as much as possible be furthest from other potential.

## Battery replacement method (Figure 1):

1. unscrew the probe tip
2. fold down the plastic cover
3. pull off the shading cup
4. replace the battery according to the polarity indicated in the battery holder





### **Voltage monitoring operations:**

The voltage detector has a nominal voltage of 10-36 kV (three-phase system). used to detect the presence of voltage on electrical equipment. Can be used operating bar: VK-TR-C-2000 (Manufacturer: VILLBEK Kft.)

The storage box of the device contains 3 types of touch tips. Of these, the straight tactile tip can be used indoors and outdoors, while hook and fork are tactile tips can only be used for outdoor equipment. Tension during spying a the regulations for the use of insulating rods must be observed! Holding the insulating rod by the handle, touch the voltage detector a for the equipment to be tested.

### **THE POINT OF TOUCH SHOULD BE ON A METAL SURFACE!!**

(paint, dirt free)

In the presence of nominal voltage, the red LED flashes rhythmically and intermittently an audible signal is heard.

### **Maintenance, inspection, storage, repair, prohibitions:**

Except for battery replacement, it does not require maintenance. Mechanical before use condition by visual inspection, functionality by pressing the test button. It needs to be checked. In the event of any type of malfunction or damage to the device use is prohibited. The cycle time recommended by the manufacturer for periodic review is two years. Store in the metal storage box provided by the manufacturer. The product is periodical reviewed by the manufacturer or an accredited laboratory, repaired only by the manufacturer you can do it.